

The background is a painting of a coastal scene. In the foreground, a large, craggy rock formation is rendered in warm, golden-yellow and brown tones, with visible brushstrokes. The rock extends from the bottom left towards the center. Beyond the rock, a deep blue sea stretches to the horizon. The sky above is a lighter, clear blue. The overall style is expressive and somewhat somber.

Поэзия света

«Лунная ночь на Днепре» 1890 г

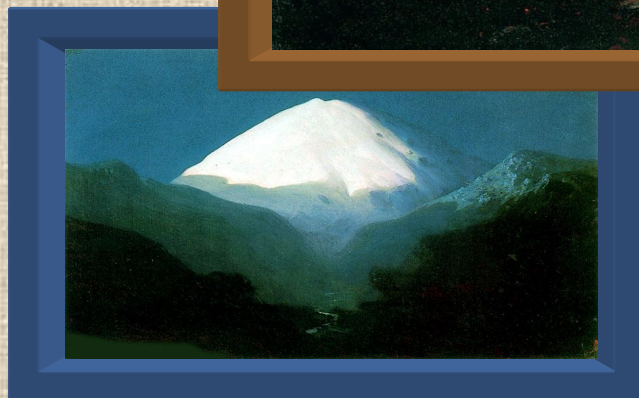
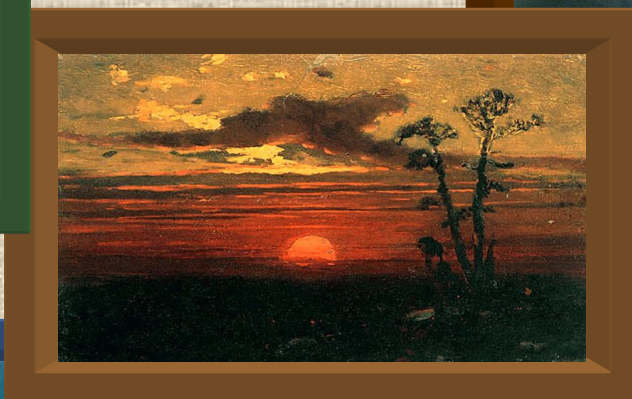
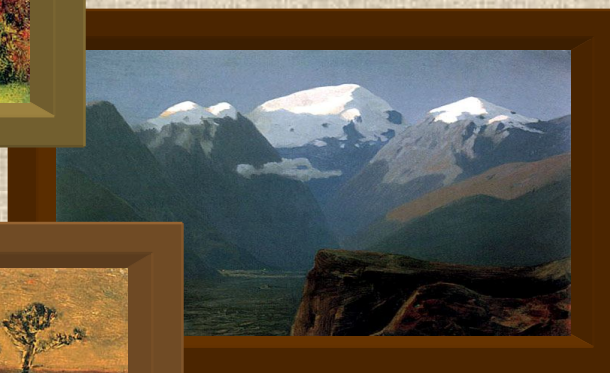
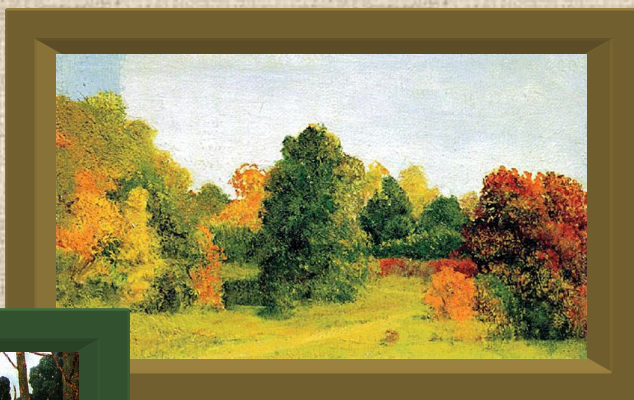




*Куинджи
Архип Иванович
1842 - 1910*



Пейзажи



«Березовая роща» 1879г.



«Эльбрус. Лунная ночь» 1890 - 1895гг



«Закат» 1879г



«Осень» 1876 - 1890гг



«Снежные вершины. Кавказ» 1890 - 1895гг











С
т
е
п
а
н
о
в
а

В
и
к
а

quobela